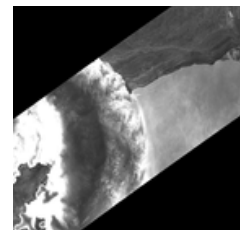
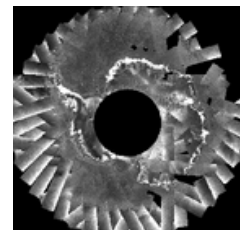
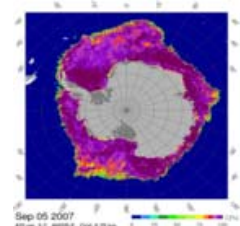




Polar View in the Antarctic is currently delivering sea ice information in the Southern Ocean. The Polar View services deliver **near-real-time information on sea ice conditions** for the entire Southern Ocean and are currently **free to users**. Timely information access supports the **safe and efficient navigation** of vessels operating in the Antarctic.

Polar View offers the following services, utilising a range of satellite imagery and derived products, all of which are accessible to users at the [Polar View Antarctic Node website](http://www.polarview.aq) (www.polarview.aq):

- **Daily Sea Ice Concentration:** Daily updated images of sea ice concentration for the entire Antarctic continent. Derived from [AMSR-E passive microwave data](#), this service provides coarse resolution information with each pixel representing sea ice concentration at a resolution of 6.25km.
- **High resolution SAR imagery:** ENVISAT SAR (Synthetic Aperture Radar) satellite imagery provides detailed information about sea ice type and distribution. This data type is well suited to sea ice applications due to its high spatial resolution and ability to 'see-through' cloud. Access to this imagery is provided in two ways:
 - **High-resolution single images:** Satellite images are scheduled for acquisition to coincide with a particular ships cruise plan. After acquisition these [images](#), with resolution finer than 100 metres, are delivered direct to users either via email, ftp or online.
 - **Global mode mosaics:** Mosaics of the entire Southern Ocean are updated daily. These composite images, with approximately 1 kilometre resolution, include all data acquired by the Envisat ASAR instrument during the previous three days.



Polar View provides access to these services in various ways, including:

- **Dedicated java browser:** Polar View also provides a dedicated browser, which allows the Polar View services and other monitoring information related to the Southern Ocean to be combined in a single view. This viewer is available online or can be set up as a stand-alone application on a ship which receives automatic daily updates.
- **Polar View in Google Earth:** If you have access to Google Earth, you can see some of the Polar View services [here](#) (www.seaice.dk/polarview/kml/all/kml).



For further information and to access the services please visit the [Polar View Antarctic Node website](http://www.polarview.aq) (www.polarview.aq).

To discuss the services we offer and plan for delivery of Polar View sea ice information to your ship, please contact [Andrew Fleming](mailto:andrew.fleming@polarview.org) (andrew.fleming@polarview.org) or [Paul Bowyer](mailto:paul.bowyer@polarview.org) (paul.bowyer@polarview.org).